

FIBA levels of the FS and FC series scoreboards

General index

1. INTRODUCTION.....	1	6. SERIES FS SCOREBOARDS FOR LEVEL 2 FIBA COMPETITIONS.....	7
1.1. FIBA competitions levels.....	1	7. 24 SECOND SHOT CLOCK TIMERS.....	9
2. CHARACTERISTICS OF THE FS SERIES SCOREBOARDS.....	2	7.1. Shot Clocks for LEVEL 1 FIBA competitions.....	9
3. CHARACTERISTICS OF THE FC SCOREBOARDS.....	3	7.2. Shot Clocks for LEVEL 2 FIBA competitions.....	9
4. SCOREBOARDS FOR LEVEL 1 FIBA COMPETITIONS.....	4	8. FIBA CERTIFICATE OF APPROVAL.....	10
5. SERIES FC SCOREBOARDS FOR LEVEL 2 FIBA COMPETITIONS.....	6		

1. Introduction

This document lists the models of the FS and FC series scoreboards that satisfy the various levels of basketball competitions as defined by the FIBA (Fédération Internationale de Basketball) regulations. Please note that these scoreboards are built in conformity with the official FIBA specifications and have the FIBA Certificate of Approval (see Section Errore: sorgente del riferimento non trovata, page Errore: sorgente del riferimento non trovata).

1.1. FIBA competitions levels

FIBA defines the followings competition levels (“*Official Basketball Rules 2020 - Basketball Equipment*”, “*FIBA Internal Regulations. Book 2. Competitions*”):

Level 1.

FIBA National Team and Club Competitions plus other elite level national and international club and national team competitions.

- National Team
 - a) The FIBA World Cup, for Men and Women, and their Qualifiers;
 - b) The FIBA Continental’s Cups, for Men and Women, and their Qualifiers;
 - c) The Olympic Tournaments, the FIBA Olympic Qualifying and Pre-Qualifying Tournaments, for Men and Women;
 - d) The FIBA Under-19 and Under-17 World Championships for Men and Women;
 - a) All FIBA Continental Cups for Youth Categories, including all qualifying games and tournaments for above competitions.
- Club Team
 - a) All international club competitions (leagues, cups, games and tournaments) organised by FIBA or its Regional Offices.

Level 2.

Any other competition not included in Level 1.

According to the level of the FIBA competitions, it needs to use one or more models to obtain the suitable scoreboard: see the chapters 4, 5, 6 e 7.

2. Characteristics of the FS series scoreboards

Following are listed the essential characteristics of the various FS series scoreboards (in cm).

		FS-120N (art.240N)	FS-130N (art.242N)	FS-412B (art.260B)	FS-412C (art.260C)	FS-412D (art.260D)	FS-412E (art.260E)	FS-412F (art.260F)	FS-414B (art.262B)	FS-414C (art.262C)	FS-414D (art.262D)	FS-414E (art.262E)	FS-414F (art.262F)
Team score	Height	30	30										
	Width	15	15										
Chronometer	Height	30	30										
	Width	15	15										
Team fouls	Height	30	30										
	Width	15	15										
Period	Height	30	30										
	Width	15	15										
Timeout	Diameter	8	8										
Team name	Height	15	15										
	Characters No. ²	8	8										
Player number for last foul	Height		30										
	Width		15										
Last foul	Height		30										
	Width		15										
Player number	Height			15	15	15	15		15	15	15	15	
	Width			7	7	7	7		7	7	7	7	
Player fouls	Height			3,5 ¹	3,5 ¹	15	15		3,5 ¹	3,5 ¹	15	15	
	Width					7	7				7	7	
Player points	Height				15		15			15		15	
	Width				7		7			7		7	
Player name	Height							15					15
	Characters No. ³							12					12

(1) Diameter of the point

(2) Per team

(3) Per player

3. Characteristics of the FC scoreboards

Following are listed the essential characteristics of the various FC series scoreboards (in cm).

		FC50H25N (art.3045025N)	FC54H25N (art.3045425N)	FC60H25N (art.3046025N)	FC62H25N (art.3046225N)	FC54H25N12A1 (art.3045425N12A1)	FC60H25N12B2 (art.3046025N12B2)	FC62H25N12B2 (art.3046225N12B2)
Team score	Height	25	25	25	25	25	25	25
	Width	12,5	12,5	12,5	12,5	12,5	12,5	12,5
Chronometer	Height	25	25	25	25	25	25	25
	Width	12,5	12,5	12,5	12,5	12,5	12,5	12,5
Team fouls	Height	20	20	20	20	20	20	20
	Width	10	10 ³	10	10	10 ³	10	10
Period	Height	20	20	20	20	20	20	20
	Width	10	10	10	10	10	10	10
Timeout	Diameter	2,5	2,5	2,5	2,5	2,5	2,5	2,5
Team name	Height	16	16	16	16	16	16	16
	Characters No. ¹	6	6	6	6	6	6	6
Penalty time	Height		20	15	15	20		
	Width		10	7,5	7,5	10		
Penalized player No.	Height			15	15		15	15
	Width			7,5	7,5		7,5	7,5
Player No.	Height					8,3	10	10
	Width					4,1 ²	5	5
Player fouls	Diameter					2,5	2,5	2,5

(1) Per team

(2) Not programmable

(3) Shared with penalty time

4. Scoreboards for LEVEL 1 FIBA competitions

The scoreboards of the following compositions are built in conformity with the FIBA specifications for the level 1 competitions and have the FIBA Certificate of Approval (see Section Error: sorgente del riferimento non trovata). Please note that, for the side panels, every article code includes a couple of panels; for instance, the code FS-412F (art.260F) includes both the panels, right and left, for the visualization of the players' names.

FS-412F	FS-412E	FS-120N	FS-412E	FS-412F	
					For 12 players Dimensions: 650 x 240 x 11.5 cm Weight: 328.5 kg
Fig. 1: FS-120N (art.240N) + FS-412E (art.260E) + FS-412F (art.260F)					

FS-412F	FS-412E	FS-130N	FS-412E	FS-412F	
					For 12 players Dimensions: 650 x 240 x 11.5 cm Weight: 329 kg
Fig. 2: FS-130N (art.242N) + FS-412E (art.260E) + FS-412F (art.260F)					

FS-412F	FS-412C	FS-120N	FS-412C	FS-412F	
					For 12 players Dimensions: 730 x 260 x 11.5 cm Weight: 303 kg
Fig. 3: FS-120N (art.240N) + FS-412C (art.260C) + FS-412F (art.260F)					

FS-412F	FS-412C	FS-130N	FS-412C	FS-412F	
					For 12 players Dimensions: 730 x 260 x 11.5 cm Weight: 303.5 kg
Fig. 4: FS-130N (art.242N) + FS-412C (art.260C) + FS-412F (art.260F)					

FS-414F	FS-414E	FS-120N	FS-414E	FS-414F	
					For 14 players Dimensions: 650 x 300 x 11.5 cm Weight: 389.5 kg
Fig. 5: FS-120N (art.240N) + FS-414E (art.262E) + FS-414F (art.262F)					



For 14 players
 Dimensions: 650 x 300 x 11.5 cm
 Weight: 390 kg

Fig. 6: FS-130N (art.242N) + FS-414E (art.262E) + FS-414F (art.262F)



For 14 players
 Dimensions: 730 x 340 x 11.5 cm
 Weight: 358.5 kg

Fig. 7: FS-120N (art.240N) + FS-414C (art.262C) + FS-414F (art.262F)



For 14 players
 Dimensions: 730 x 340 x 11.5 cm
 Weight: 359 kg

Fig. 8: FS-130N (art.242N) + FS-414C (art.262C) + FS-414F (art.262F)

5. Series FC scoreboards for LEVEL 2 FIBA competitions

The following scoreboards are built in conformity with the FIBA specifications for the level 2 competitions and have the FIBA Certificate of Approval (see Section Errore: sorgente del riferimento non trovata).



Dimensions: 140 x 108 x 9 cm
Weight: 33 kg

Fig. 9: **FC50H25N** (art.3045025N)

Dimensions: 140 x 143 x 9 cm
Weight: 40 kg



Fig. 10: **FC54H25N** (art.3045425N)



Dimensions: 140 x 168 x 9 cm
Weight: 48 kg

Fig. 11: **FC60H25N** (art.3046025N)

Dimensions: 140 x 178 x 9 cm
Weight: 52 kg



Fig. 12: **FC62H25N** (art.3046225N)



Dimensions: 241 x 143 x 9 cm
Weight: 70 kg

Fig. 13: **FC54H25N12A1** (art.3045425N12A1)

For 12 players
Dimensions: 257 x 200 x 9 cm
Weight: 106 kg



Fig. 14: **FC60H25N12B2** (art.3046025N12B2)



For 12 players
Dimensions: 257 x 200 x 9 cm
Weight: 108 kg

Fig. 15: **FC62H25N12B2** (art.3046225N12B2)


6. Series FS scoreboards for LEVEL 2 FIBA competitions

The following compositions (with or without the side panels) are compliant to the FIBA specifications for the level 2 competitions and have the FIBA Certificate of Approval (see Section Error: sorgente del riferimento non trovata). Please note that, for the side panels, every article code includes a couple of panels, the left one and the right one.




Dimensions: 200 x 180 x 9 cm
Weight: 66.5 kg

Fig. 16: **FS-120N** (art.240N)




Dimensions: 200 x 180 x 9 cm
Weight: 67 kg

Fig. 17: **FS-130N** (art.242N)



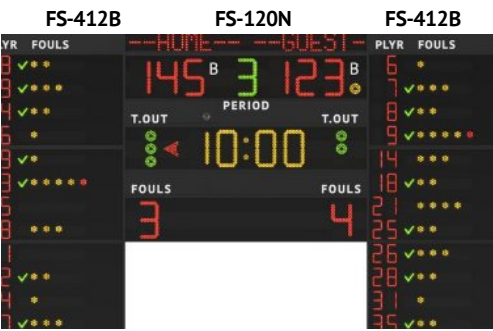
For 12 players
Dimensions: 360 x 240 x 11.5 cm
Weight: 159.5 kg

Fig. 18: **FS-120N** (art.240N) + **FS-412D** (art.260D)



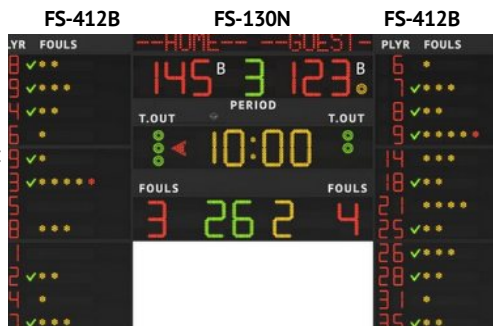
For 12 players
Dimensions: 360 x 240 x 11.5 cm
Weight: 160 kg

Fig. 19: **FS-130N** (art.242N) + **FS-412D** (art.260D)



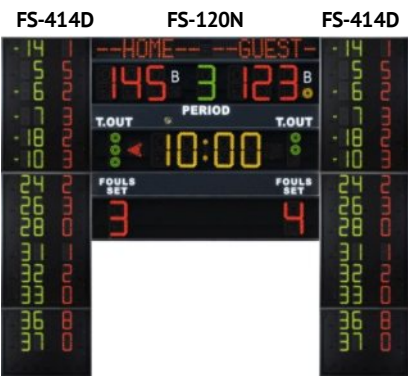
For 12 players
Dimensions: 440x260x11.5 cm
Weight: 134.5 kg

Fig. 20: **FS-120N** (art.240N) + **FS-412B** (art.260B)




For 12 players
Dimensions: 440x260x11.5 cm
Weight: 135 kg

Fig. 21: **FS-130N** (art.242N) + **FS-412B** (art.260B)



For 14 players
Dimensions: 360 x 300 x 11.5 cm
Weight: 180.5 kg

Fig. 22: **FS-120N** (art.240N) + **FS-414D** (art.262D)



For 14 players
Dimensions: 360 x 300 x 11.5 cm
Weight: 181 kg

Fig. 23: **FS-130N** (art.242N) + **FS-414D** (art.262D)

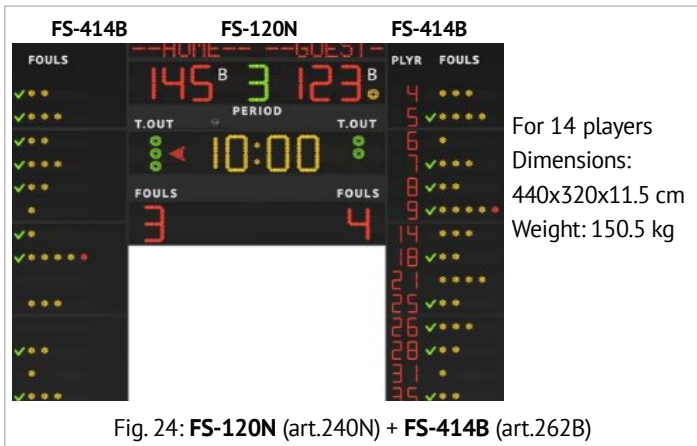


Fig. 24: **FS-120N** (art.240N) + **FS-414B** (art.262B)

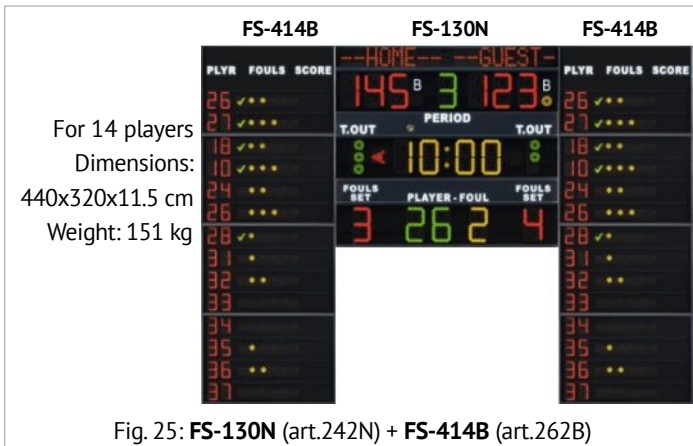


Fig. 25: **FS-130N** (art.242N) + **FS-414B** (art.262B)

7. 24 second Shot Clock timers

These scoreboards are built in conformity with the FIBA specifications and have the FIBA Certificate of Approval (see Section Error: sorgente del riferimento non trovata).

1.1. Shot Clocks for LEVEL 1 FIBA competitions



Dimensions: 72 x 60 x 72 cm
 Weight: 38 kg
 4-sided display
 24 second digits: 30 cm
 Game time digits: 14 cm

Fig. 26: **FS-24s-4B** (art.258-54)

Dimensions: 70,5 x 60 x 62 cm
 Weight: 29 kg
 3-sided display
 24 second digits: 30 cm
 Game time digits: 14 cm



Fig. 27: **FS-24s-3B** (art.258-53)

1.2. Shot Clocks for LEVEL 2 FIBA competitions



Dimensions: 41 x 29 x 8,5 cm
 Weight: 6 kg
 24 second digits: 20 cm

Fig. 28: **FS-24s-H20** (art.257)

Dimensions: 70,5 x 60 x 11,5 cm
 Weight: 11 kg
 24 second digits: 30 cm
 Game time digits: 14 cm



Fig. 29: **FS-24s-1B** (art.258-51)



Dimensions: 28,5x32x10cm
 Weight: 2,75 kg
 24 second digits: 20 cm

Certification pending

Fig. 30: **WSC-24s** (art.268-10 e art.268-02)