

Spare parts: MILLENNIUM REEL



Art.905
BOX-5 transport-case for 2 reels and cables
Size: 60x40x13,5cm. - Weight: 3.0kg.



Art.905-02
Plastic handle for gray carrying case, 60x40cm
Spare part
Weight: 0.017kg.



Art.905-06
Set of 2 grey closure locks for gray carrying case, 60x40cm
Spare part
Weight: 0.008kg.



Art.900-C1
CABLE FOR REEL, 20m long
Spare part
Weight: 0.3kg.



Art.907
Cable 20m long with fencer-end socket, for reel
Spare part
Weight: 0.3kg.



Art.906
REEL FENCER-END SOCKET,complete
Weight: 0.05kg.



Art.900C1-M
Reel cable, type 900-C1 (1 meter)
To order one coil of the wished length
Weight: 0.015kg.



Art.900-04
Cable guide for reel
Spare part
Weight: 0.01kg.



Art.900-05
Set of rubber feet for reel (4 pieces)
Spare part
Weight: 0.01kg.



Art.900-02
Set of 3 springs with plastic parts
Spare part
Size: 19x19x4,5cm. - Weight: 0.89kg.



Art.900-13
Braking set
Spare part
Weight: 0.031kg.



Art.900-12
REEL HANDLE with screws
Spare part
Weight: 0.027kg.



Art.900-11
Circuit board for aluminium roller
Spare part
Weight: 0.005kg.



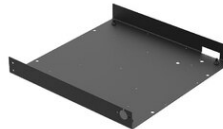
Art.900-16
Plastic ring for the Millenium reel arbor
Spare part
Weight: 0,01kg.



Art.900-09
Three sockets connector on reel-case
Spare part
Weight: 0.017kg.



Art.900-08
...Internal aluminium roller
Spare part
Size: 33x33x3,3cm. - Weight: 0.3kg.



Art.900-07
...Reel case bottom (of stainless steel)
Spare part
Size: 34x33,6x4cm. - Weight: 1.6kg.



Art.900-06
...Reel case cover (of stainless steel)
Spare part
Size: 34x34x4cm. - Weight: 1.7kg.



Art.900-15
Set of screws to fix the reel cover (4 pieces)
Spare part
Weight: 0.01kg.



Art.900-14
Edge plastic protection
Spare part
Weight: 0.002kg.
